



Chilcompton Road

Midsomer Norton, BA3 2PH

£450,000

Vendors comments - "18 years ago our children had left home so this smaller property was an ideal size. It sits on a bus route, and has ample parking. It is close to shops and a level walk to the town centre. The garden was fairly flat, and the property although needing some work was in good repair. It is an adaptable, deceptively large comfortable home. We liked it at first sight."

- Large plot
- Spacious bungalow
- Flexible accommodation
- Ample driveway parking
- Walking distance to amenities
- Bus route on your doorstep

Viewing

Please contact our Bath Stone Property (MSN) Office on 01761 360144

if you wish to arrange a viewing appointment for this property or require further information.



3



1

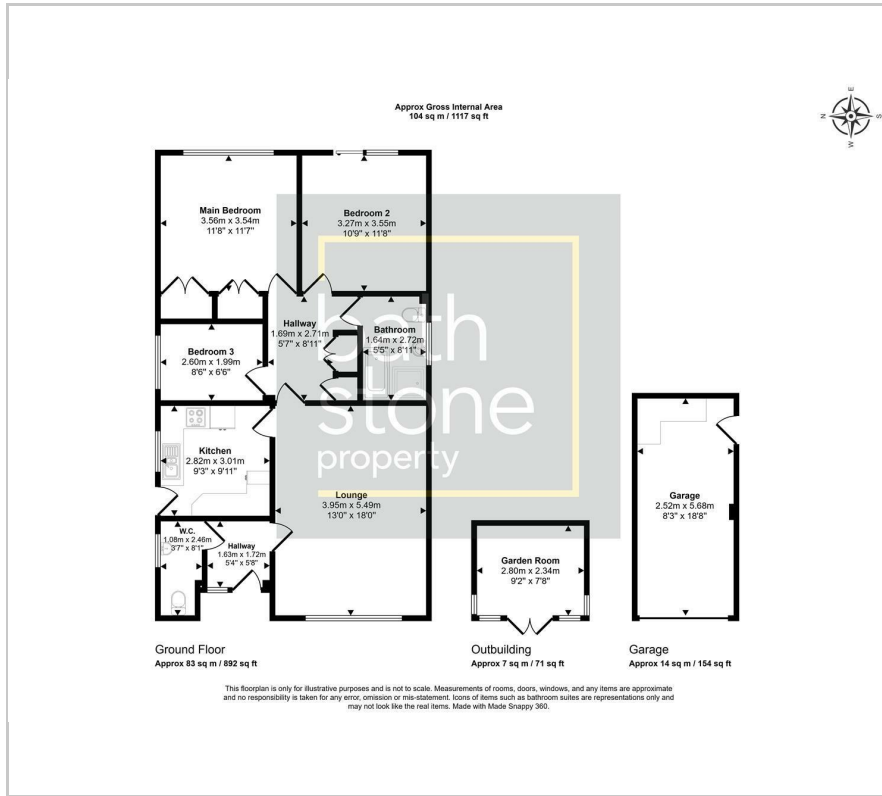


1

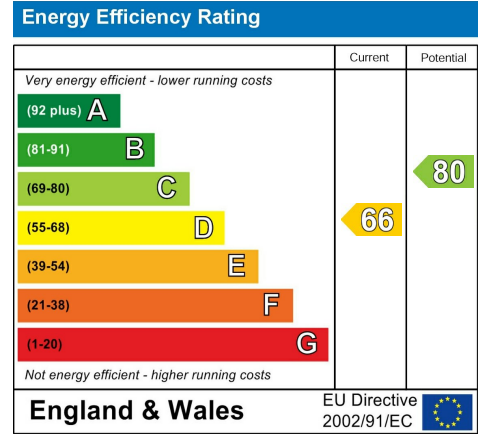


D

Floor Plan



Energy Efficiency Graph



Please give us Feedback



These particulars, whilst believed to be accurate are set out as a general outline only for guidance and do not constitute any part of an offer or contract. Intending purchasers should not rely on them as statements of representation of fact, but must satisfy themselves by inspection or otherwise as to their accuracy. No person in this firm's employment has the authority to make or give any representation or warranty in respect of the property.